



MONTHLY MEMBERSHIP PROGRESS REPORT

District 13 B

Results as of: 11/30/2015

GMT: Cindy Gregg

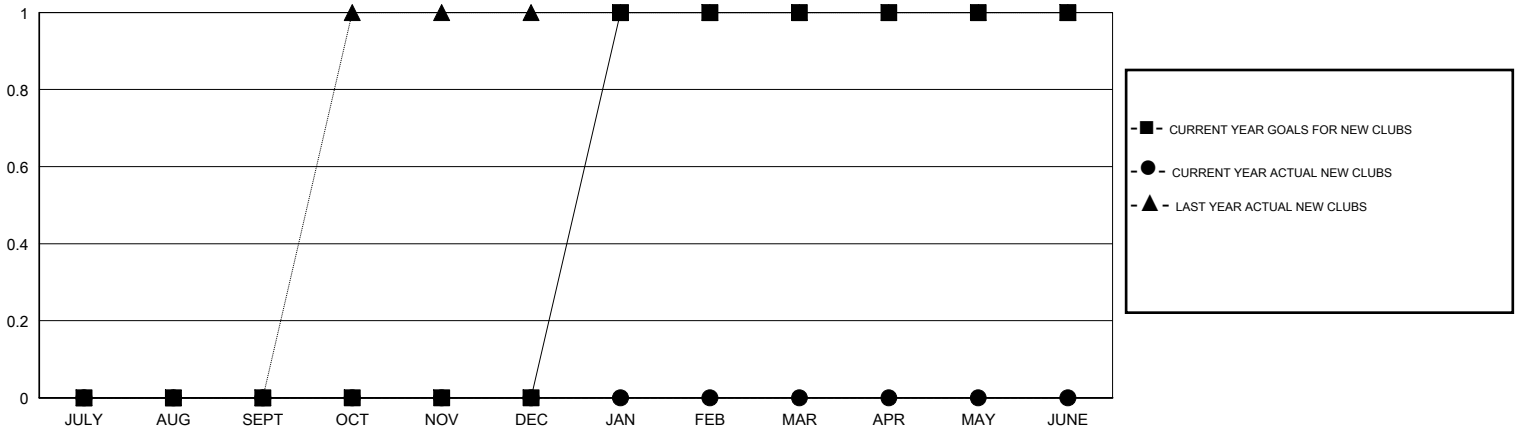
LOCATION OHIO

GMT CA 1

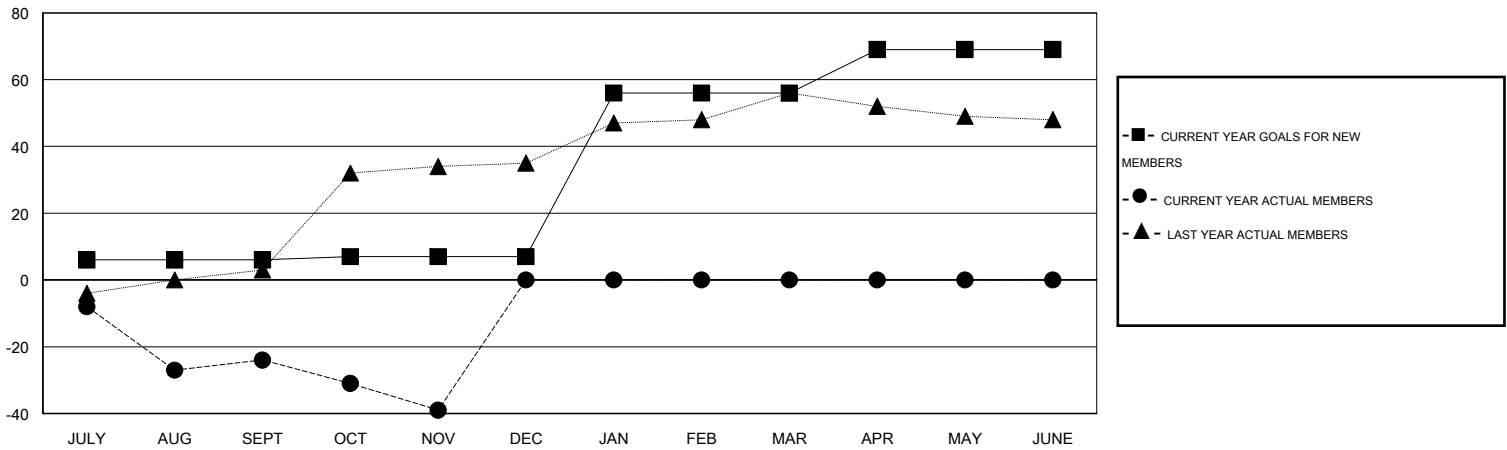
Clubs				
RESULTS FOR 2015-2016				
QUARTER	NEW CLUB GOAL	NEW CLUBS	DROPPED CLUBS	NET GAIN/LOSS
JULY/AUG/SEPT	0	0	0	0
OCT/NOV/DEC	0	0	1	-1
JAN/FEB/MAR	1	0	0	0
APR/MAY/JUNE	0	0	0	0

Members				
RESULTS FOR 2015-2016				
QUARTER	NEW MEMBER GOAL	CHARTER AND NEW MEMBERS ADDED	DROPPED MEMBERS	NET GAIN/LOSS
JULY/AUG/SEPT	6	26	50	-24
OCT/NOV/DEC	1	20	35	-15
JAN/FEB/MAR	49	0	0	0
APR/MAY/JUNE	13	0	0	0

GOALS AND ACTUAL NEW CLUBS CUMULATIVE



GOALS AND ACTUAL MEMBERS CUMULATIVE



DROPPED CLUBS: 1	21 CLUBS OF 56 ADDED 1 OR MORE NEW MEMBERS	<u>GENDER DISTRIBUTION</u>	
<u>DROPPED MEMBERS</u>		MALE	1,439 (76.10%)
DECEASED	CLICK HERE FOR HEALTH ASSESSMENT DATA	FEMALE	452 (23.90%)
CLUB CANCELLED		FAMILY UNIT MEMBERS	366
OTHER		HEAD OF HOUSEHOLD	179
TOTAL		NON-HEAD OF HOUSEHOLD	187